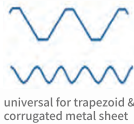




Solar Mounting Catalog



(Authorized Distributor)



OVERVIEW

The solution is widely used for corrugated metal roofs with high performance in wind and snow resistance. Self-tapping screw and hanger bolt are alternatives to connect the purlin and solar structure. Save your time and cost from structure design to on-site service.



FEATURE

- 1. Good flexibility. Good flexibility to match various types of metal roofs.
- 2. Good stability. Good stability when attached directly on roof purlin.
- 3. Compliant with different standards. Compliant with European, American, Australian and other international standards.

SPECIFICATION

System Name	MetaRoof-MT-L feet with C Rail
Roof Type	Metal roof
Tilt Angle	0°-45°
Wind Load	60m/s
Snow Load	1.6KN/m²
Applicable Solar Module	Framed/Frameless
Panel Layout	Portrait/Landscape
Design Standard	BS EN1991, ASCE7-10, BS 6399, AS-NZS 1170, GB 50009-2012, MS 1553
Material	AL-6005-T6 & SUS304 & EPDM
Color	Sliver/Black
Warranty	10-year

CERTIFICATE



		Description	4-Panel	6-Panel	8-Panel	10-Panel	12-Panel
1		TYN 417 Rail 4700mm	2	2	4	4	6
2		TYN 417 Rail 2300mm	0	2	0	2	0
3		Splice for TYN417 Rail	0	2	2	4	4
4		End Clamp 30/35 Kit	4	4	4	4	4
5		Mid Clamp 30/35 Kit	6	10	14	18	22
6		L Feet Kit/ Hanger Bolt	8	12	16	20	24
7		Grounding Lug Kit	2	2	2	2	2
8		Grounding Clip	6	10	14	18	22
9		Cable Clip	4	6	8	10	12



OVERVIEW

With professional design, the perfect connection between the roof support and the roof can be achieved to meet the customer's installation requirements. Professional solutions and structural design can save your installation time and cost.



FEATURE

- 1. Non-penetrating solution. Non-penetrating roof clamp mounting ensure water-tightness.
- 2. High suitability. A variety of roof clamps suit for all roofing sheets.
- 3. Simple and quick installation. Simple and quick installation by fixing the clamp to the metal roofs.
- 4. Expand installation availability . Expand installation availability while there is no suitable fixing purlin under the roof.

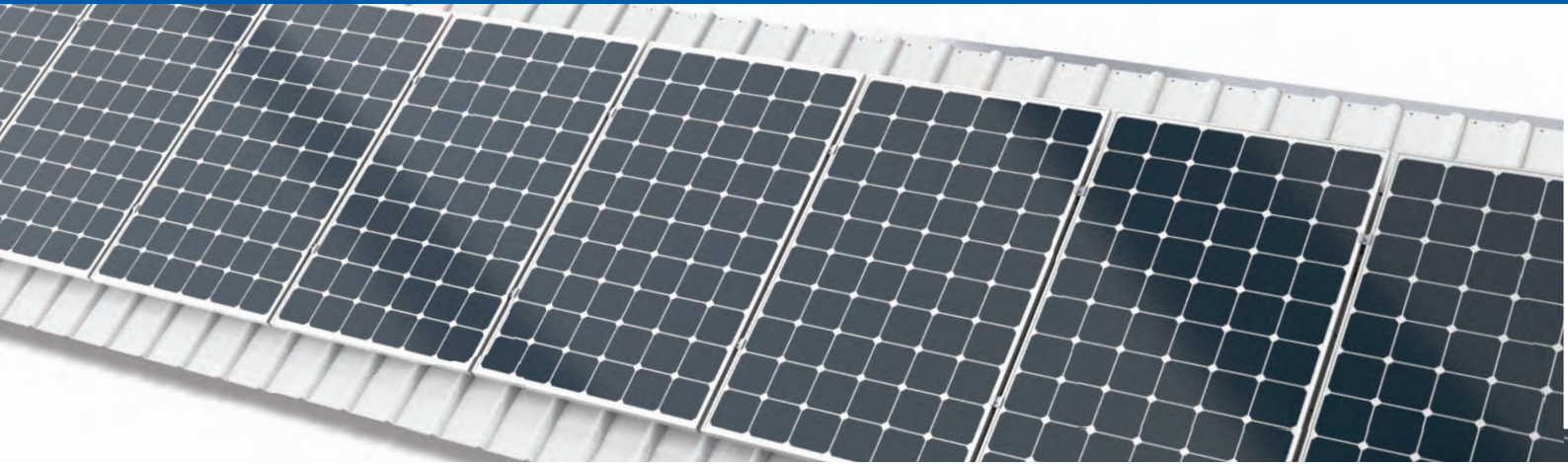
SPECIFICATION

System Name	MetaRoof-MK-Kilplok + L feet with C Rail
Roof Type	Metal roof
Tilt Angle	0°-45°
Wind Load	60m/s
Snow Load	1.6KN/m ²
Applicable Solar Module	Framed/Frameless
Panel Layout	Portrait/Landscape
Design Standard	BS EN1991, ASCE7-10, BS 6399, AS-NZS 1170, GB 50009-2012, MS 1553
Material	AL-6005-T6 & SUS304
Color	Sliver/Black
Warranty	10-year

CERTIFICATE



Description		4-Panel	6-Panel	8-Panel	10-Panel	12-Panel
1	TYN 417 Rail 4700mm	2	2	4	4	6
2	TYN 417 Rail 2300mm	0	2	0	2	0
3	Splice for TYN417 Rail	0	2	2	4	4
4	End Clamp 30/35 Kit	4	4	4	4	4
5	Mid Clamp 30/35 Kit	6	10	14	18	22
6	Kliplok	8	12	16	20	24
7	L Feet Kit	8	12	16	20	24
8	Grounding Lug Kit	2	2	2	2	2
9	Grounding Clip	6	10	14	18	22
10	Cable Clip	4	6	8	10	12



OVERVIEW

The tile roof solar mounting system offers a perfect solution for installation on tile roofing. The roof fastening is done using highly-resistant roof hooks, which are suitable for pantile, plain tiles and slate tiles. Systems are fully compliant with different international standards, making them suitable for a wide variety of climatic zones.



FEATURE

- 1. High suitability. A variety of roof hooks suit for pantile, plain tile, or slate tiles.
- 2. Meet varying load requirements. The comprehensive range of aluminum rails for varying load requirements.
- 3. Compliant with different standards. Compliant with European, American, Australian and other international standards.

SPECIFICATION

System Name	MetaRoof-TR-Hook system
Roof Type	Tile roof
Tilt Angle	0°-45°
Wind Load	60m/s
Snow Load	1.6kN/m²
Applicable Solar Module	Framed/Frameless
Panel Layout	Portrait/Landscape
Design Standard	BS EN1991, ASCE7-10, BS 6399, AS-NZS 1170, GB 50009-2012, MS 1553
Material	AL-6005-T6 & SUS304
Color	Sliver/Black
Warranty	10-year

CERTIFICATE



Description		4-Panel	6-Panel	8-Panel	10-Panel	12-Panel
1		2	2	4	4	6
2		0	2	0	2	0
3		0	2	2	4	4
4		4	4	4	4	4
5		6	10	14	18	22
6		8	12	16	20	24
7		2	2	2	2	2
8		6	10	14	18	22
9		4	6	8	10	12



OVERVIEW

The mini rail solution facilitates the rapid mounting of framed PV modules on trapezoidal metal roofs. Simple structure allows it to be installed on the roof easily. The EPDM rubber pad is in the package for perfect waterproofing.



FEATURE

- 1. Save installation time and cost. Fast installation with railless to save cost.
- 2. Perfect waterproofing. EPDM gasket under mini rails to protect from water leakage.
- 3. Professional packaging solution. Professional packaging solution for easy logistics, and cost-effective warehousing.
- 4. Customized design. Length of mini rail can be customized.

SPECIFICATION

System Name	MetaRoof-MT-Mini rail
Roof Type	Metal roof
Tilt Angle	0°-45°
Wind Load	60m/s
Snow Load	1.6KN/m²
Applicable Solar Module	Framed/Frameless
Panel Layout	Portrait/Landscape
Design Standard	BS EN1991, ASCE7-10, BS 6399, AS-NZS 1170, GB 50009-2012, MS 1553
Material	AL-6005-T6 & SUS304&EPDM
Color	Sliver/Black
Warranty	10-year

CERTIFICATE



Description		4-Panel	6-Panel	8-Panel	10-Panel	12-Panel
1		10	14	18	22	26
2		4	4	4	4	4
3		6	10	14	18	22
4		10	14	18	22	26
5		4	6	8	10	12



OVERVIEW

Antai Ballast System is mainly applied to flat roofs. Rapid installation and stable structure are guaranteed by the patented design. The simple structure meets the requirements of roof load-bearing and saves the installation time and the cost of labor.



FEATURE

- 1. Non-penetrating solution. Non-penetrating roof ballast mounting ensure water-tightness.
- 2. Save installation time and labor cost. Simple and pre-assembled structure saves the on-site installation time and labor cost.
- 3. Customized design. Ballast weight is customizable to different wind zone.

SPECIFICATION

System Name	MetaRoof-FR- Ballast system-L
Roof Type	Concrete roof
Tilt Angle	5°, 10°
Wind Load	50m/s
Snow Load	1.0KN/m²
Applicable Solar Module	Framed
Panel Layout	Landscape
Design Standard	BS EN1991, ASCE7-10, BS 6399, AS-NZS 1170, GB 50009-2012, MS 1553
Material	AL-6005-T6 & SUS304
Color	Sliver/Black
Warranty	10-year

CERTIFICATE



Description		4-Panel	6-Panel	8-Panel	10-Panel	12-Panel
1	End Clamp 30/35 Kit	16	24	32	40	48
2	Front Base	8	12	16	20	24
3	Back Base Kit	8	12	16	20	24
4	Bottom Rail L1300	8	12	16	20	24
5	Splice for Rail	1	1	1	1	1
6	Grounding Clip	16	24	32	40	48
7	Cable Clip	4	6	8	10	12



OVERVIEW

Antai Ballast System is mainly applied to flat roofs. Rapid installation and stable structure are guaranteed by the patented design. The simple structure meets the requirements of roof load-bearing and saves the installation time and the cost of labor.



FEATURE









- 1. Non-penetrating solution. Non-penetrating roof ballast mounting ensure water-tightness.
- 2. Save installation time and labor cost. Simple and pre-assembled structure saves the on-site installation time and labor cost.
- 3. Customized design. Ballast weight is customizable to different wind zone.
- 4. High space utilization. Back to Back design maximizes the use of space.

SPECIFICATION

System Name	MetaRoof-FR- Ballast system-S-E&W
Roof Type	Concrete roof
Tilt Angle	10°
Wind Load	50m/s
Snow Load	1.0KN/m²
Applicable Solar Module	Framed
Panel Layout	Landscape
Design Standard	BS EN1991, ASCE7-10, BS 6399, AS-NZS 1170, GB 50009-2012, MS 1553
Material	AL-6005-T6 & SUS304
Color	Sliver/Black
Warranty	10-year

CERTIFICATE

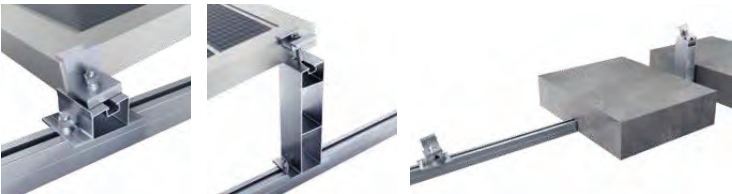


		Description	4-Panel	6-Panel	8-Panel	10-Panel	12-Panel
1		End Clamp 30/35 Kit	8	8	8	8	8
2		Mid Clamp 30/35 Kit	4	8	12	16	20
3		Front Base	6	8	10	12	14
4		Back Base(back to back)	3	4	5	6	7
5		Bottom Rail L2800	3	4	5	6	7
6		Splice for Rail	1	1	1	1	1
7		Grounding Clip	4	8	12	16	20
8		Cable Clip	4	6	8	10	12



OVERVIEW

Antai Ballast System is mainly applied to the flat roofs. Rapid installation and stable structure are guaranteed by patented design. The sample structure meets the requirements of roof load-bearing and saves the cost of labor.



FEATURE

- 1. Non-penetrating roof ballast mounting ensure watertightness.
- 2. No drilling or digging, without roof penetration.
- 3. Ballast weight is customizable to different wind zone.

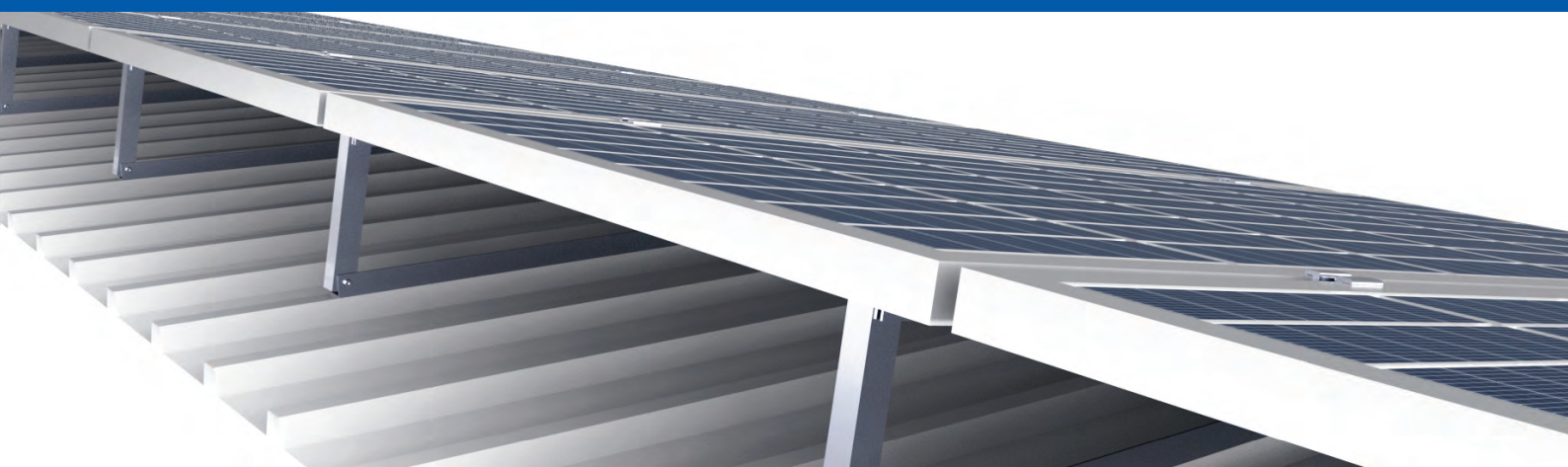
SPECIFICATION

System Name	MetaRoof-FR- Ballast system-S
Roof Type	Concrete roof
Tilt Angle	10°
Wind Load	50m/s
Snow Load	1.0KN/m²
Applicable Solar Module	Framed
Panel Layout	Landscape
Design Standard	BS EN1991, ASCE7-10, BS 6399, AS-NZS 1170, GB 50009-2012, MS 1553
Material	AL-6005-T6 & SUS304
Color	Sliver/Black
Warranty	10-year

CERTIFICATE

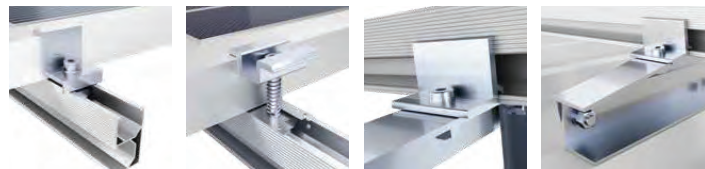


Description		4-Panel	6-Panel	8-Panel	10-Panel	12-Panel
1		4	4	4	4	4
2		6	10	14	18	22
3		5	7	9	11	13
4		5	7	9	11	13
5		5	7	9	11	13
6		1	1	1	1	1
7		6	10	14	18	22
8		4	6	8	10	12



OVERVIEW

The Triangle solution is widely used for both concrete roofs and metal roofs. The pre-assembled structure ensures quick installation and good strength. Professional packaging solution to save cost.



FEATURE

- 1. Universal design. Universal design for flat roof or metal roofs.
- 2. Various combinations. Various combinations such as ballast block, roof penetration or roof clamp.
- 3. Save installation time and labor cost. Pre-assembly triangle design saves the on-site installation time and labor cost.

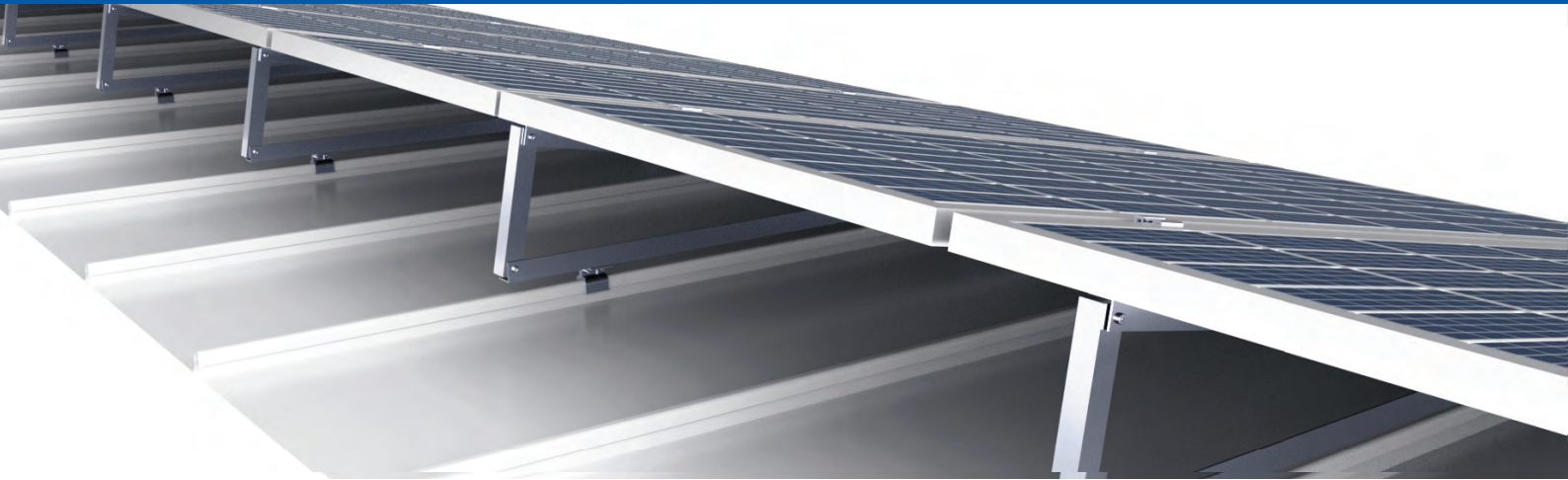
SPECIFICATION

System Name	Meta Roof-MR-Triangle System
Roof Type	Metal roof
Tilt Angle	0°-45°
Wind Load	60m/s
Snow Load	1.6KN/m²
Applicable Solar Module	Framed/Frameless
Panel Layout	Portrait/Landscape
Design Standard	BS EN1991, ASCE7-10, BS 6399, AS-NZS 1170, GB 50009-2012, MS 1553
Material	AL-6005-T6 & SUS304
Color	Sliver/Black
Warranty	10-year

CERTIFICATE

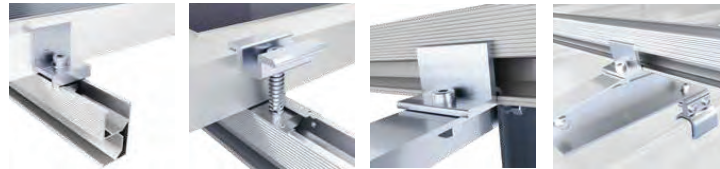


	Description	4-Panel	6-Panel	8-Panel	10-Panel	12-Panel
1	TYN 417 Rail 4700mm	2	2	4	4	6
2	TYN 417 Rail 2300mm	0	2	0	2	0
3	Splice for TYN417 Rail	0	2	2	4	4
4	End Clamp 30/35 Kit	4	4	4	4	4
5	Mid Clamp 30/35 Kit	6	10	14	18	22
6	Rail Clamp	16	24	32	40	48
7	Tripod 20°	8	12	16	20	24
8	Grounding Lug Kit	2	2	2	2	2
9	Grounding Clip	6	10	14	18	22
10	Cable Clip	4	6	8	10	12



OVERVIEW

The Triangle solution is widely used for both concrete roofs and metal roofs. The pre-assembled structure ensures quick installation and good strength. Professional packaging solution to save cost.



FEATURE

- 1. Universal design. Universal design for flat roof or metal roofs.
- 2. Various combinations. Various combinations such as ballast block, roof penetration or roof clamp.
- 3. Save installation time and labor cost. Pre-assembly triangle design saves the on-site installation time and labor cost.
- 4. High suitability . A variety of roof clamps suit for all roofing sheets.

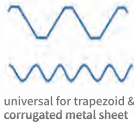
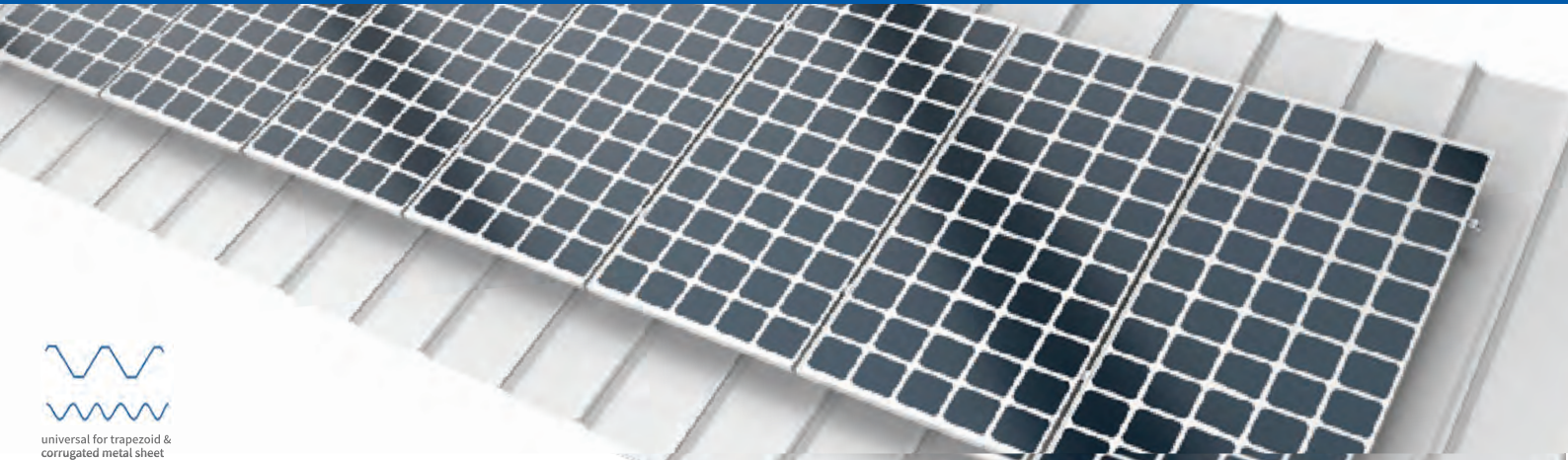
SPECIFICATION

System Name	Meta Roof-MR-Triangle System & Kliplok
Roof Type	Metal roof
Tilt Angle	0°-45°
Wind Load	60m/s
Snow Load	1.6KN/m²
Applicable Solar Module	Framed/Frameless
Panel Layout	Portrait/Landscape
Design Standard	BS EN1991, ASCE7-10, BS 6399, AS-NZS 1170, GB 50009-2012, MS 1553
Material	AL-6005-T6 & SUS304
Color	Sliver/Black
Warranty	10-year

CERTIFICATE

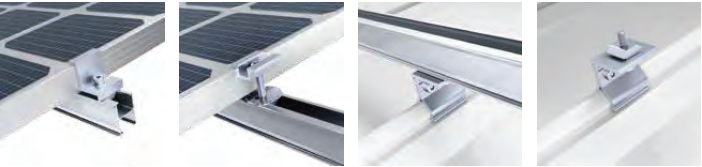


		Description	4-Panel	6-Panel	8-Panel	10-Panel	12-Panel
1		TYN 417 Rail 4700mm	2	2	4	4	6
2		TYN 417 Rail 2300mm	0	2	0	2	0
3		Splice for TYN417 Rail	0	2	2	4	4
4		End Clamp 30/35 Kit	4	4	4	4	4
5		Mid Clamp 30/35 Kit	6	10	14	18	22
6		Rail Clamp	16	24	32	40	48
7		Kliplok 700	16	24	32	40	48
8		Tripod 20°	8	12	16	20	24
9		Grounding Lug Kit	2	2	2	2	2
10		Grounding Clip	6	10	14	18	22
11		Cable Clip	4	6	8	10	12



OVERVIEW

The Kliplok with H Rail solution is widely used in metal roofs. Simple design to save your installation time and cost. Strict structural calculation with different standards ensures the strength of the project.



FEATURE

- 1. Good flexibility. Good flexibility to match various types of metal roofs.
- 2. Good stability. Good stability when attached directly on roof purlin.
- 3. Compliant with different standards. Compliant with European,American, Australian and other international standards.
- 4. Non-penetrating solution. Non-penetrating roof clamp mounting ensure waterproof.

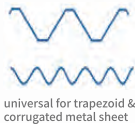
SPECIFICATION

System Name	MetaRoof-MT- Trapezoid with H Rail
Roof Type	Metal roof
Tilt Angle	0°-45°
Wind Load	60m/s
Snow Load	1.6KN/m²
Applicable Solar Module	Framed/Frameless
Panel Layout	Portrait/Landscape
Design Standard	BS EN1991, ASCE7-10, BS 6399, AS-NZS 1170, GB 50009-2012, MS 1553
Material	AL-6005-T6 & SUS304
Color	Sliver/Black
Warranty	10-year

CERTIFICATE



		Description	4-Panel	6-Panel	8-Panel	10-Panel	12-Panel
1		H Rail 4700mm	2	2	4	4	6
2		H Rail 2300mm	0	2	0	2	0
3		Splice for H Rail	0	2	2	4	4
4		End Clamp 30/35 Kit	4	4	4	4	4
5		Mid Clamp 30/35 Kit	6	10	14	18	22
6		Kliplok 406	8	12	16	20	24
7		Grounding Lug Kit	2	2	2	2	2
8		Grounding Clip	6	10	14	18	22
9		Cable Clip	4	6	8	10	12



universal for trapezoid & corrugated metal sheet

OVERVIEW

Antai Kilplok without rail system facilitates the rapid mounting of framed PV modules on different shape of metal roof.Simple structure allows it to be installed on the roof easily.Non-penetrating roof clamp mounting ensure waterproof.



FEATURE

- 1. Save installation time and cost. Fast installation with railless to save cost.
- 2. Perfect waterproofing. Non-penetrating roof clamp mounting ensure waterproofing.
- 3. Professional packaging solution. Professional packaging solution for easy logistics, and cost-effective warehousing.

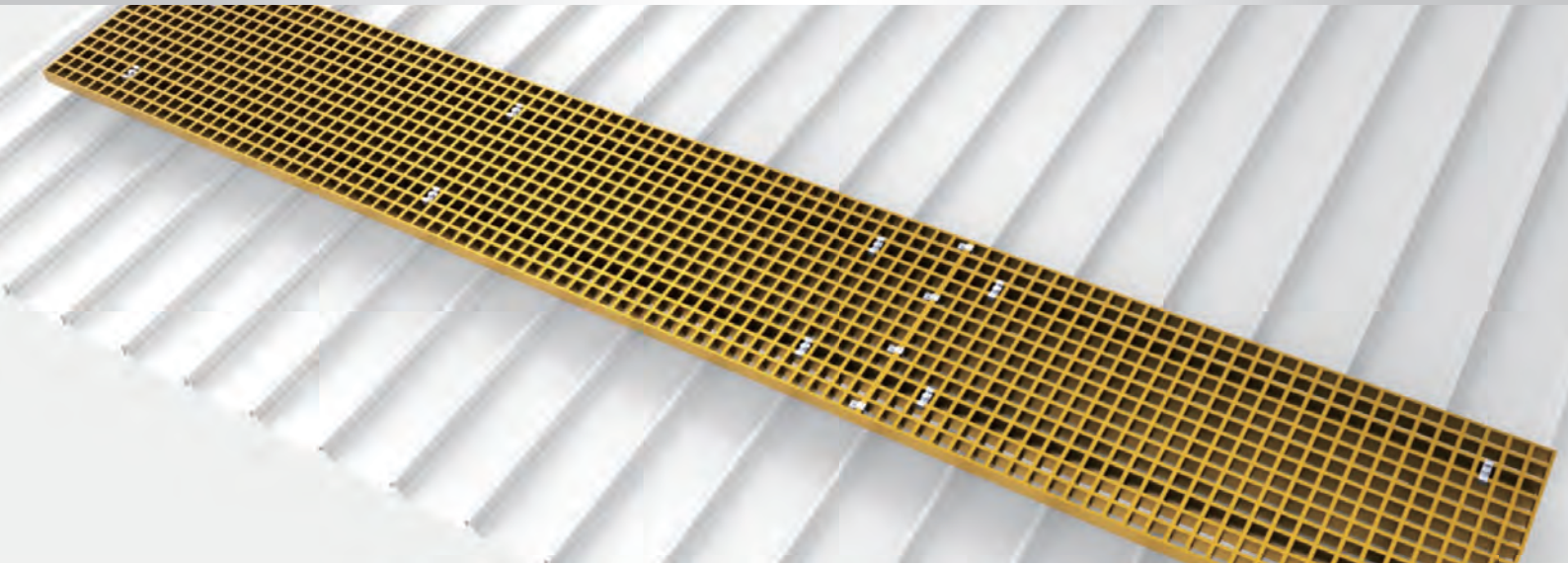
SPECIFICATION

System Name	MetaRoof-MK-Kilplok without rail system
Roof Type	Metal roof
Tilt Angle	0°-45°
Wind Load	60m/s
Snow Load	1.6KN/m²
Applicable Solar Module	Framed/Frameless
Panel Layout	Landscape
Design Standard	BS EN1991, ASCE7-10, BS 6399, AS-NZS 1170, GB 50009-2012, MS 1553
Material	AL-6005-T6 & SUS304
Color	Sliver/Black
Warranty	10-year

CERTIFICATE



		Description	4-Panel	6-Panel	8-Panel	10-Panel	12-Panel
1		Kilplok 700 Without Rail	10	14	18	22	26
2		End Clamp 30/35 Kit	4	4	4	4	4
3		Mid Clamp 30/35 Kit	6	10	14	18	22
4		Grounding Lug Kit	2	2	2	2	2
5		Grounding Clip	10	14	18	22	26
6		Cable Clip	4	6	8	10	12



FEATURE

- 1. Light weight and high strength. It's easy to install on the roof.
- 2. Strong corrosion resistance. Durable to extended the product life.
- 3. Good insulation. Good insulation guarantees safe use.
- 4. Good heat insulation. Good insulation performance reduces heat loss.
- 5. Good anti-slip and hydrophobic performance. Facilitates post-inspection and reduces rainwater accumulation.

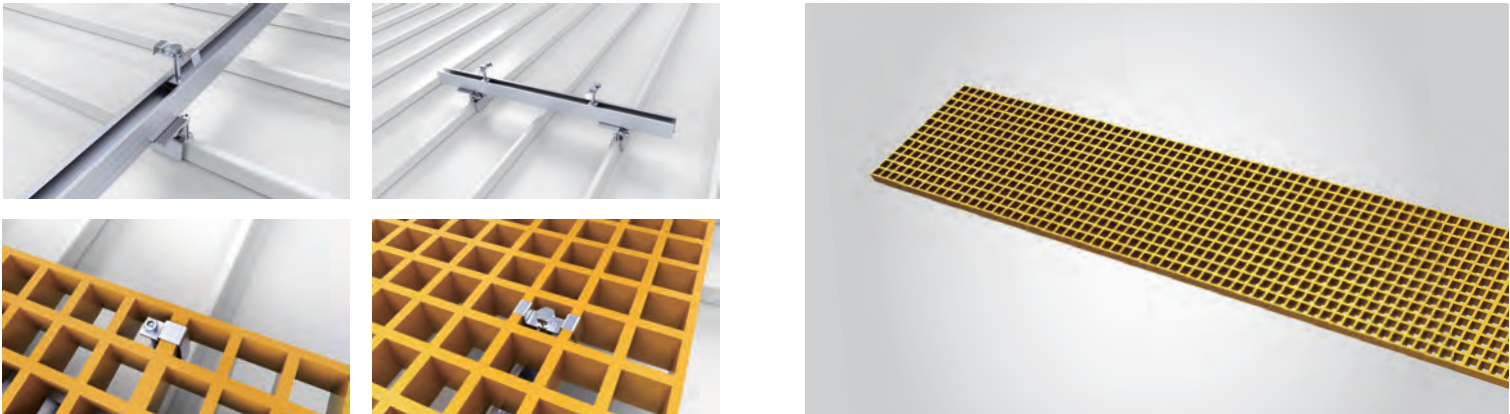
CERTIFICATE



COMPONENT



INSTALLATION



Thickness (mm)	Width (mm)	Length (mm)	Grating Size (mm)	Load Capacity
25	348	1222	38*38	80KG/m ²
	386	2442		
	424	3654		
	462	/		
	500			
30	348	1222	38*38	180KG/m ²
	386	2442		
	424	3654		
	462	/		
	500			
38	348	1222	38*38	300KG/m ²
	386	2442		
	424	3654		
	462	/		
	500			



FEATURE

- 1. Lightweight and easy to install.
- 2. Excellent anti-slip performance. Easy to walk on and inspect.
- 3. Strong anti-corrosion performance to extend the product life.
- 4. Good stability. Good stability with the anti-rust and durable performance.
- 5. Good appearance. Good appearance design makes the product good appearance.

CERTIFICATE



COMPONENT



INSTALLATION



Thickness (mm)	Width (mm)	Length (mm)	Load Capacity
40	350	1200	300KG/㎡
	400	2400	
	450	3600	
	500	—	



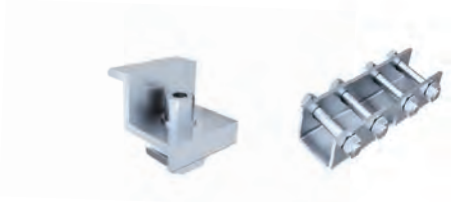
FEATURE

- 1. High strength. Excellent and durable product performance.
- 2. Anti-corrosion. Strong corrosion resistance and long service life.
- 3. Lightweight. Reduce the roof load.

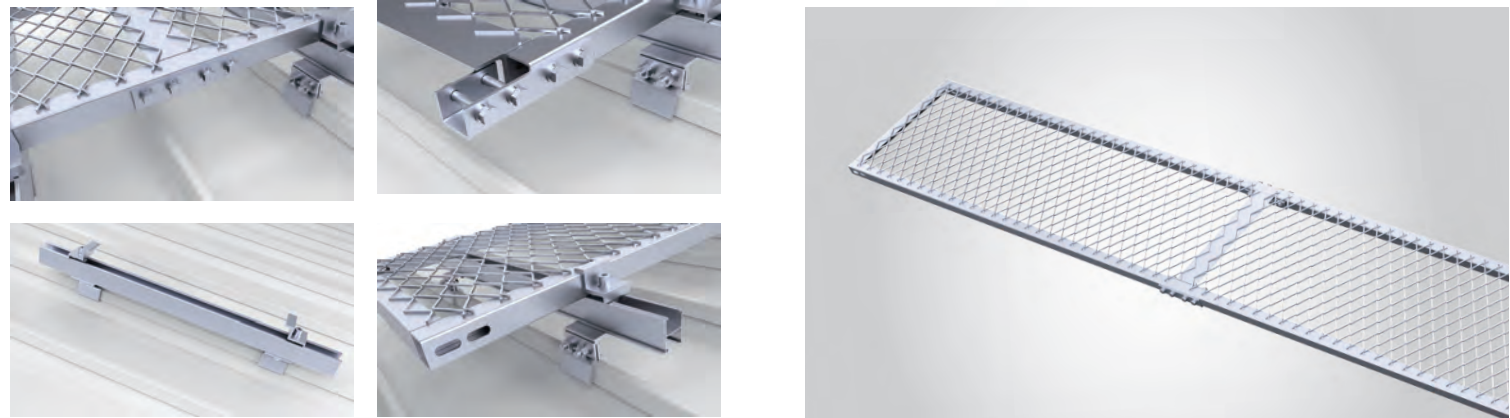
CERTIFICATE



COMPONENT



INSTALLATION



Thickness (mm)	Width (mm)	Length (mm)	Load Capacity
30	350	1200	450KG/㎡
	400	2400	
	450	3600	
	500	—	



YARRA POWER CO.,LTD. (Authorized Distributor)
10th Fl. H.S.H. Building 191/1 Rama III Road,
Bang Khlo, Bang Kho Laem, Bangkok 10120 Thailand

Tel : + 66 95 565 4642
E-mail : info@yarrapower.com
Website : www.yarrapower.com

